

ICIP-D2000-IR

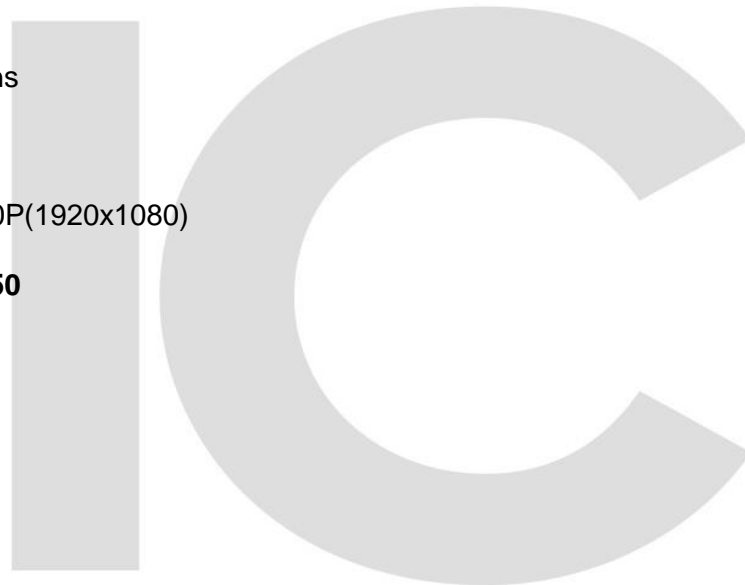
2 Megapixel Indoor/Outdoor, Mini Orbital IR Dome IP Camera



Similar in design to cameras like the ICR2000, the ICIP-D2000-IR is an orbital, free-floating dome camera. This camera is a popular seller, due to its high resolution and ease of installation. Inside the camera, it contains a high resolution, 2 Megapixel Sony Progressive Scan Exmor CMOS sensor, capable of outputting a crisp, clear image. The optics on this camera include a fixed 3.6mm lens. Built in IR LED illumination is effective up to 60' at 0 light.

Features

- 3.6mm fixed lens
- IP66, PoE
- 25/30fps@1080P(1920x1080)
- **UL Listed 60950**



ICIP-D2000-IR

Specifications

Model	ICIP-D2000-IR
Camera	
Image Sensor	1/2.8" 2Megapixel progressive scan Exmor CMOS
Effective Pixels	1920(H)×1080(V)
Scanning system	Progressive
Electronic Shutter Speed	Auto/Manual, 1/3(4)~1/10000s
Min. Illumination	0. 1Lux/F1.6 (Color), 0Lux/F1.6(IR on)
S/N Ratio	>50dB
Camera Features	
Max IR LEDs Length	60Ft/20m
Day/Night	Auto (ICR) / Color / B/W
Backlight Compensation	BLC / HLC / DWDR
White Balance	Auto / Manual
Gain Control	Auto / Manual
Noise Reduction	3D
Privacy Masking	Up to 4 areas
Lens	
Focal Length	3.6mm
Max Aperture	F1.8
Focus Control	Manual
Angle of View	H:88°
Lens Type	Fixed lens
Mount Type	Board-in Type
Video	
Compression	H.264/MJPEG
Resolution	1080P(1920×1080) / 720P(1280×720) / D1(704×480) / CIF(352×240)
Frame Rate	Main Stream: 1080P/720P(1 ~ 25/30fps) Sub Stream: D1/CIF(1 ~ 25/30fps)
Bit Rate	H.264: 32K ~ 8192Kbps, MJPEG: 32K ~20480Kbps
Network	
Ethernet	RJ-45 (10/100Base-T)
WiFi	N/A
Protocol	IPv4/IPv6, HTTP, HTTPS, SSL, TCP/IP, UDP, UPnP, ICMP, IGMP, SNMP, RTSP, RTP, SMTP, NTP, DHCP, DNS, PPPOE, DDNS, FTP, IP Filter, QoS, Bonjour
Compatibility	ONVIF,PSIA,CGI
Max. User Access	20
Smart Phone	iPhone, iPad, Android, Windows Phone
General	
Power Supply	DC12V, PoE (802.3af)
Power Consumption	< 4W
Working Environment	-30°C ~ 60°C/-22 °F ~ 140 °F; Less than 95% RH
Ingress Protection	IP66
Dimensions	Φ113.6mm×85.8mm/ Φ5.26"×3.38"
Weight	0.29kg/0.64lb

ICIP-D2000-IR

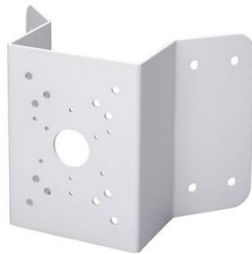
Optional Accessories



[MNT-IPMINIDOME-WALL](#)



[MNT-JUNCTION BOX 1](#)



[MNT-PCNRIP](#)



[MNT-POLIP](#)